



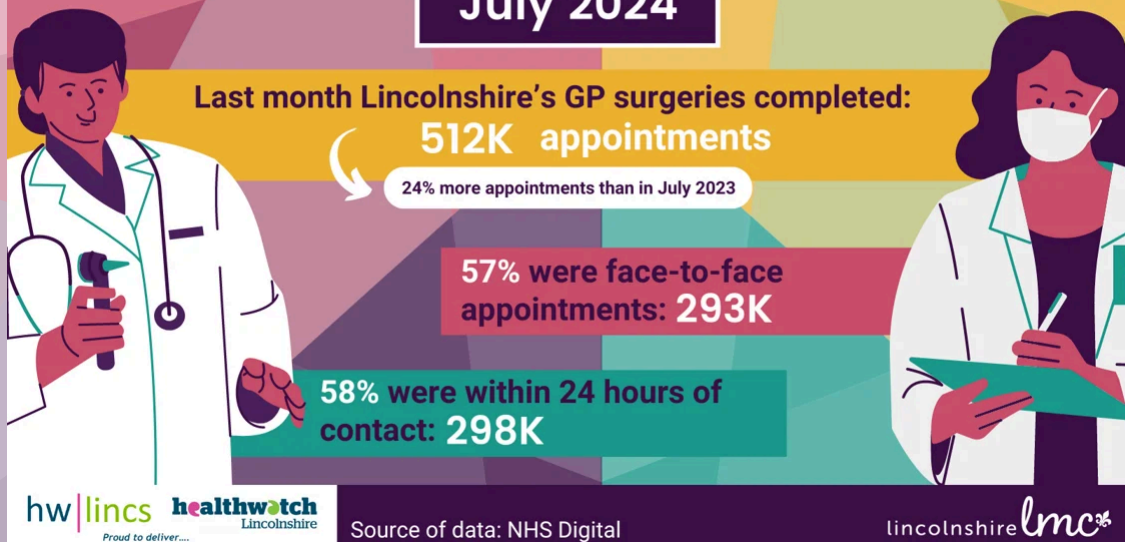
Lincolnshire LMC Weekly Update 30/08/2024

The Lincs LMC weekly update is an overview of our published information relevant to practices. All of our weekly updates can be found by clicking the button below.

[Previous Lincolnshire LMC Weekly Updates](#)

Lincs General Practice Appointment Infographic

Appointments in Lincolnshire General Practice July 2024



Last month, Lincolnshire general practice completed 512K appointment (24% more than in July 2023), more than half of these were offered within 24 hours of contact.

[View and download our infographics here](#)

IMPORTANT - CLOUD TELEPHONY UPDATE

As part of the 2024/25 contract imposed on the profession in April, NHS England has sought directions from the Secretary of State to extract data from our clinical systems on our Cloud Based Telephony (CBT) usage.

An email will have been sent by NHS England to your practice outlining the instructions to comply with this data extraction under section 259 (1) (a) of the Health and Social Care Act 2012. NHS England go on to state '*All general practices are therefore mandated to comply with this invitation and approve the collection.*' The legal basis for the collection is explained in the Data Provision Notice you will also have been sent [here](#). This will enable your call data to be extracted on a monthly basis. The BMA has taken its own legal advice on this request: **practices cannot decline** the instructions, as doing so will risk breaching their contract. GPC England has made it clear to NHS England that the data must not be used to performance manage practices or single them out for criticism.

The PCN DES has provision for a Capacity and Access Improvement Payment (CAIP) which has three components. On behalf of PCN member practices, PCN CDs can sign up to and receive payments for each of these components. You may recall from our roadshows and webinars this Summer, that the PCN DES includes three components of the Capacity and Access Improvement Payment (CAIP). This data extraction is the component pertaining to the existing use of CBT and the above data extraction for relevant metrics. **GPCE advice is that should a practice fail to sign up to the CBT data extraction ahead of the October 1st deadline, there may be a risk of a breach notice being imposed as well as contravening the Health and Social Care Act 2012.**

There is **another component** to mention here as it relates to ask No 9 in the collective action campaign. You may recall the discussions around online consultations being available to patients every working day 08:00-18:30, irrespective of practice pressures. GPCE has significant concerns around online consultation software being available to patients for the duration of 08:00-18:30 given practices' lack of capacity, and their responsibilities for ensuing patient safety. **GPCE advice continues to apply here: CDs are advised not to sign this particular declaration (online consultation availability) presently, but to await further guidance closer to the financial year end.**

Most recent News:

- [CQC Interim Chief Executive Updates on Progress](#)
- [August 2024 GMS Contract Variation Notices](#)
- [BMA sessional GP conference 2024: diversity, opportunity, safety.](#)

[All News](#)

Most recent Guidance:

- [Guidance for GP Surgeries on Patients Recordings Consultations](#)
- [QOF Point Value and Prevalence](#)
- [National Medical Examiner's guidance for England and Wales](#)

 **Lincs LMC August Newsletter Out Now!** 



Lincolnshire LMC, Commerce House, Outer Circle Road, Lincoln, Lincolnshire LN2 4WJ

[Manage preferences](#)